

**GRACEADES  
COMMUNITY COTTAGE  
INC.**



**2016 to 2017  
ANNUAL GENERAL MEETING  
REPORTS**

## \* MISSION STATEMENT \*

By providing an efficient level of service provision and innovative work practices, Graceades Cottage aims to create an integrated community hub that is inclusive and responsive to local needs.

## \* VALUE STATEMENT \*

By providing diverse services that offer equal access to all who live in the community we continue to build effective partnerships and networks that assist in supporting and b promoting stronger communities that are sustainable.

## \* VISION \*

**Mt Druitt, a community that is:**  
Committed to Social Justice, Caring and Cohesive,

Informed and Pro-active

Resilient,  
Respectful,  
Responsive,

Strong,  
United,  
Vibrant,

Has Pride and a Strong Voice

**GRACEADES COMMUNITY COTTAGE INCORPORATED**

# **GRACEADES COMMUNITY COTTAGE INC.**

**1982 to 2017**



- **What's it all about?**
  - **Community Involvement**
- **Social – Recreational & Cultural Activities**
- **Service Information & Referral – Advocacy**
  - **Access to Phone – Fax – Photocopier  
Computer & Internet facilities**
  - **Meeting Place - to connect with other  
local residents across  
Generational – Cultural – Geographical &  
Social Boundaries**
  - **The Shed – Drop In for Young People**
    - **Outreach Programs**

# CONTENTS

**MISSION STATEMENT**

**WHAT'S IT ALL ABOUT?**

**ACKNOWLEDGEMENT**

**AGENDA**

**MINUTES PREVIOUS ANNUAL GENERAL MEETING**

**VICE-PRESIDENT'S REPORT**

**MANAGER'S REPORT**

**PROJECT REPORTS**

**AUDITOR'S REPORT**

**MANAGEMENT COMMITTEE NOMINEES**

**ELECTION of MANAGEMENT COMMITTEE**

**GRACEADES COMMUNITY COTTAGE INC.**

# ANNUAL GENERAL MEETING Wednesday 18<sup>th</sup> October 2017

## AGENDA

Welcome:

Acknowledgement of Place:

Chairperson: Kaye Reeder

Meeting Opened:

Apologies:

Attendance: Please sign attendance book

Minutes of Previous Annual General Meeting:

Annual General Meeting Reports:

President's Report

Manager's Report

Project Reports

Auditor's Report & Nomination of Auditor for 2016-2017

Acceptance of Reports:

Business Arising from Reports:

Thanks to outgoing Office Bearers:

Returning Officer:

Elections of new Office Bearers:

Meeting Closed:

**GRACEADES COMMUNITY COTTAGE INC.**

## ACKNOWLEDGEMENTS

**The Board of Management and Staff of Graceades Community Cottage would like to thank the volunteers and organisations that have supported us during the past year.**

To the community members who have volunteered their time and helped in so many various ways, from assisting with the running of programs including School Holiday Program to helping with gardening, repairs and maintenance of the Cottage, we express our sincere thanks and appreciation. If not for your continued support the Cottage would not be able to continue our work in this community.

**We would also like to acknowledge the organisations that have supported us and assisted us financially during the past year.**

**NSW Family & Community Services:** Re-currant Core Cottage funding

**NSW Family and Community Services Housing:** Provision of venue - 2 Rose Court, BIDWILL

**Mission Australia:** Innovation Project

**Holy Family Church:** Venue for Willmot Community HUB

**Australian Government; Department of Infrastructure and Regional Development:** The Cottage Garden

**Rooty Hill RSL - Clubs Grant—Urban Myths Project**

**Marty Secheny - Bidwill Hotel -The Cottage Garden**

**Ed Husic - Federal Member for Chifley - Funding for the Cottage Garden**

**Social Housing Community Improvement Fund - SHCIF Round 1 - Graceades Cottage Disability Bathroom and Tiled Floors**

**Social Housing Community Improvement Fund - SHCIF Round 1 - Willmot Community HUB**

**Security Cameras, Air Conditioners and Garden Wall, Flower Beds and Willmot Community HUB Sign**

**Social Housing Community Improvement Fund - SHCIF Round 1- Cottage Gardens**

**Security Cameras and Pergola**

**Social Housing Community Improvement Fund - SHCIF Round 2 - Cottage Gardens**

**Concrete Slab and Concrete Paths for Disability Access**

**Volunteer Grant-Fresh Food Friday**

**Volunteer Grant - Men Empowering Themselves M.E.T.S**

**St George Bank - Basketball Hoop**

**The financial support of these organisations is vital for the Cottage to be able to carry on with the provision of services for the local community.**

## **WORKING IN PARTNERSHIPS**

**Here at Graceades Cottage we recognise our most important partnership is with the people living around the Cottage.  
THANK YOU TO OUR NEIGHBOURS!**

The ongoing support and encouragement of the following organisations and individuals is also greatly appreciated by the Graceades Management and Staff.

**Community Resource Network: Community Connect & Governance Support.  
Family Referral Service  
Mental Health Commission**

**Peter Cvetkovski: IT Technician - Volunteer**

**Bidwill Community Garden**

**Evelyn Namoli- Bidwill Community Voice - Community Newsletter**

**Women's Multicultural Luncheons  
Partnerships - MECA, CatholicCare Social Services  
WASH House Inc., Mission Australia**

**Blacktown City Council  
Bidwill On Board  
Community Resource Network  
Rap 4 Change  
Working Together In Willmot  
Work Placement Volunteers**

**Holy Family Father Stan, Father Gregory and Ray Donaldson  
Willmot Community HUB Partnership  
Youth Off The Streets  
Anglicare  
Bridges—Counselling  
Willmot Community Group  
CatholicCare African Communities Group and Homework Support**

**Mt Druitt TAFE - AOD/Mental Health & Youth Student Placements  
OTEN TAFE - Community Welfare Student Placement Program**

**GRACEADES COMMUNITY COTTAGE INC.**

# GRACEADES COMMUNITY COTTAGE

## ANNUAL GENERAL MEETING

18<sup>th</sup> October 2016

### MINUTES

**Meeting Opened:** 11.45 am

#### **Welcome:**

Patricia Formosa acknowledged that we were meeting on Aboriginal Land of the Darug people. She then paid respects to Elders past and present. Patricia Formosa welcomed all those present to the AGM and invited all to lunch after the meeting.

Patricia then introduced all members of the outgoing management committee to those present and turned the meeting over to the Chairperson Kaye Reeder

**Attendance:** 30 as per attendance book

**Apologies:** Ed Husic MP – Member for Chifley, Margaret Tipper-Community Resource Network, Belinda Young and Rebecca-Housing NSW, John Dacey-Bidwill Uniting Church, Vicki Lewinski - Willmot Cyber Café, Rebecca Deep-Productivity Bootcamp, David Luxford-METS Group, John Owen and Peta Kennedy

#### **Minutes of Previous AGM:**

The minutes of the previous AGM were presented to the meeting and were then passed as correct. Accepted: Barbara Hopkinson: Seconded: Kaye Reeder.

#### **AGM Reports:**

##### **President's Report**

Kaye read out her report to the meeting. She thanked all workers and volunteers who have worked so hard during the year and the other committee members for their continued support. Kaye expressed a special thanks to all who had supported her over the year since the passing of her husband.

##### **Manager's Report**

Patricia presented her report to the meeting. She thanked the management committee for their hands on approach and continuing support. Patricia then thanked all the volunteers and facilitators who worked on all our programs during the year and also the students who did their work experience at the Cottage and contributed greatly to the programs they were participating in.



Patricia advised of the progress with the METS Men's Group at Willmot and then gave an update on the ongoing Productivity Bootcamp program. Patricia then thanked all the staff and congratulated them and the committee on the great teamwork that has been achieved over the year.

She then invited people to read through the report to see all the activities the Cottage had been doing this past year.

### **Program Development Worker's Report**

Ivanka presented her report and told of all the activities and programs that happened throughout the year. She advised the meeting of the successful WDO project, the Oz Harvest food hamper distribution and the groups and activities that took place over the past year at Graceades and Willmot and the incredible response from the wider community including donations, volunteer assistance and the subsequent working bee at the Cottage after the Struggle Street program was aired. She thanked the volunteers, facilitators and college students for their valuable support.

### **LEP Worker's Report – HOOK'D UP**

Janice addressed the meeting and spoke of the program which is currently running and how the children in her groups at the local schools had responded to the program and the flow on effect to the families of the children. She said that engagement with these children went well and was achieving great outcomes for the children and their families. She thanked her assistants and volunteers for their support during the year.

### **Project Worker's Report**

Wendy Howard addressed the meeting and informed them of the work she is doing in her beading classes with selected students from Bidwill High School. Lynda Murphy informed people about her Ceramics class, Elaine Parker informed people about her Quilting class and Barbara Hopkinson informed people about her Scrapbooking and Card Making classes.

### **Acceptance of Reports**

The Chairperson asked that the reports be accepted. President's report and Worker's reports were: Accepted: Barbara Hopkinson and Seconded: Elaine Parker

### **Treasurer's Report**

Barbara Hopkinson presented the audit report to the meeting. She thanked Brenda for all her hard work on the accounts during the year and invited everyone to read through the auditor's report in the AGM booklet. Those present were advised that if there were any questions regarding the audit that financial information is available for anyone who may wish to see it.

Treasurer's report: Accepted: Carol Dwyer Seconded: Bridgett Prior

### **Nomination of Auditors for 2016/17**

It was recommended that Ross Fowler and Co be appointed as auditors for the 2016/2017 financial year

Accepted: Barbara Hopkinson    Seconded: Elaine Parker

### **Business Arising**

The Chairperson asked if there was any business arising from the reports.  
No business arising.

### **ELECTION OF NEW COMMITTEE**

Patricia thanked the outgoing committee for their dedication and hard work and turned the meeting over to the returning officer, Mrs Brenda Ransom  
All committee positions were declared vacant and the election of the new committee proceeded.

Nominations for the following positions were accepted by the nominees

PRESIDENT	Kaye Reeder
VICE PRESIDENT	Elaine Parker
TREASURER	Barbara Hopkinson
SECRETARY	Lynda Murphy
ORDINARY MEMBERS	Lee Anne Murray
	Julie Britton
	Bridgett Prior

The new committee was congratulated and Patricia thanked the Returning Officer then turned the meeting over to the new committee.  
Kaye thanked everyone for attending, declared the meeting closed and invited all to join in the lunch.

**Meeting Closed:**     12.35 pm



## GRACEADES COMMUNITY COTTAGE MANAGER'S REPORT 2016 to 2017



### **Manager's Report**

2016 – 2017 has seen Graceades Cottage transformed before our very eyes. We are all extremely pleased with results. A great big thank you to FACS Housing (SHCIF Funding) and especially to Ivanka who took on the role of Project Manager to oversee all the refurbishments to the cottage from start to finish.

As can be seen from the following reports and pictures it has been a busy time for our groups, programs and services. However, much change has been taking place in the Community Sector at large and for the Cottage in particular.

Our Federally Funded Innovation Project failed in its bid to gain accreditation for the HOOK'D UP program. Very disappointing that this successful programs is no longer funded through Mission Australia. This also means that we had to say good-bye to Janice who had been working with us for about seven years. We wish her well in her future endeavours

Our M.E.T.S. group was also in for change when their venue at the Willmot Community Hub could no longer accommodate their building activities. We now enjoy having the men around the Cottage, keeping our lawns in check and taking care of small maintenance projects. Plans for this additional community meeting space certainly look exciting and once again we thank funding providers including Bidwill Hotel, Federal Community Building Grant – Ed Husic and State Community Partnerships Building – Edmond Atalla. Thanks also to David who facilitates the M.E.T.S. group on a Friday.

Another addition at the cottage this year is Ned, his workers and volunteers for “Rap4Change”. This group is connecting with young people right across Mt Druitt and bringing positive change to a whole generation of kids in so many ways.

Our support for our Productivity BootCamp has seen Rebecca and Paul lead their dedicated team to mentor groups of young people to gain skills in the building and construction industry. Please take the time to read Rebecca's report and find out more about this exciting initiative.

Using Graceades Cottage experience and expertise has enabled WSTEC and Productivity BootCamp to access Federal Funding for young people to obtain basic educational qualifications, tertiary training and for some to even gain employment. This funding stream has now finished unfortunately.

The TEIP Reform process has included consultations, forums and mapping workshops, requiring Ivanka and I to travel to Blacktown and Parramatta on a number of occasions. New contracts, reporting and accountability processes will be introduced for the next financial year. A learning curve for all of us here at the Cottage, but we have been encouraged by our contacts at FACS, who say we are certainly headed in the right direction with our service delivery work plans.

Participation in the Linker Network, Willmot Place Based Project has seen Janice, Ivanka and I, all attending regular meetings providing worker hours for the consultation process “Community Conversations” and as part of the partnership program of School Holiday Programs for Willmot kids and their parents.

I do encourage you to read through all the following reports at your leisure to see the diverse projects and great events, undertaken throughout last year. Payment of State Debt fines through the Work and Development Orders’ Program has provided a new start for many Mt Druitt families. The ‘work for the Dole’ project allows a great many local job seekers fulfil their responsibilities, to enable them to receive benefits they are entitled to. So much valuable down to earth work that builds trust in the neighbourhood where we are located.

**Free Food Friday** – Thanks Oz Harvest and Christ Mission Possible for the food and thanks to the team of volunteers who package up hampers of food for their local community.

**Wednesday Night Dinners** – Thanks to Christ Mission Possible (for the food) and Living Bread Ministries with their band of volunteers who cook up and serve great meals here Wednesday nights fortnightly.

**A really great big Thank you** to Ken, who picks up and delivers furniture in the local community and brings in supplies of blankets, shampoos etc. for distribution – we know the locals appreciate your efforts and here at Graceades we look forward to seeing you on your visits over so many years now. You are like Santa Clause without the Red Suit and Whiskers.

There are a great many individual people who make donations of furniture, homewares and clothing. We can assure you that all of these goods are distributed across Mt Druitt to families who are struggling to make ends meet. Other service providers who share their bounty with us are also helping our workers to meet the needs of the many people who came to us because they are at the end of their tether.

Great working partnerships with other Organisations and Agencies helps us to reach right across Mt Druitt. Ivanka has built a fine reputation for Graceades Cottage as being a force to get the job done. We could not provide so many diverse programs without these partnerships.

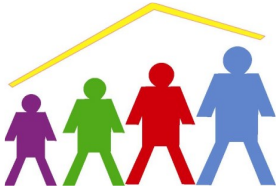
We have a wonderful team of staff at the cottage and in particular I must mention the invaluable help and support we receive from Brenda our Administration/Book keeper. She is such a steady and reliable influence to all us all.



I do sincerely thank each member of our Management Board for the time and energy they contribute to governance of the organisation. They are also quick to put up their hand to supply yummy cakes for events and are not too proud to volunteer for the many other day-to-day tasks around Graceades Cottage.

### **Looking forward to the year ahead**

*Cheers*  
*Patricia Formosa*  
*Manager*



**GRACEADES COTTAGE**



*"Building Stronger Communities"*

## **A Message from our President**

On behalf of the Board of Management Graceades Community Cottage, I welcome you to the annual general meeting and report to the year ending 30th June 2017.

The Management Board wishes to thank all Graceades Cottage staff for their outstanding work throughout the year.

We thank Ivanka for doing her job of organizing events and coordinating programs and helping students. The Biggest Morning tea was great and we increased our donations this year. We thank our Manager Patricia for overseeing the operations of Graceades Cottage and her support for staff and community.

While Patricia was on her Medical leave she still managed to have input into the Cottage. We are glad she is on the road to recovery.

Brenda thank you for your admin and Bookkeeping duties you are an asset to the cottage.

Thank you Leanne and Julie for their great job with fresh food Friday.

In closing I would like to thank the Management Board members for their support throughout the year the cottage has achieved positive outcomes for the community and we can continue in the year ahead.

- Kaye Reeder, President

Graceades Cottage has held a strong partnership with Productivity Bootcamp since their inception in early 2015. Through the Department of Employment's Empowering Youth Initiative, this partnership has provided over 300 local young people with the opportunity to participate in this innovative, life-changing program.

The 8 week program is aimed at arming young people with the skills they need to be successful and productive employees. Participants acquire skills in steel-fixing, formwork, concreting, carpentry, bricklaying and much more. But more importantly, they build the work ethic and attitude they need to succeed.

Approximately 85% of graduates have moved in to employment and 9% have successfully returned to school.





## *Thanks from Ivanka*

THE YEAR HAS FLOWN ONCE AGAIN AND HERE WE ARE  
IN OCTOBER AND ITS TIME FOR GRACEADES COMMUNITY  
COTTAGE AGM 2016 —2017

It has been a busy year with programs, activities, events!

The cottage also had a make over in January new tiled flooring and a disability bathroom was installed and this was funded by Social Housing Community Improvement Fund Round 1.

At the same time we were extremely lucky interior painting downstairs. New LED lighting was installed inside and outside of the cottage and electrical wires and lighting installed to the new shipping container thank you to NSW Land and Housing Corporation.

Anne Skewes, Catrina Kim and Kevin Marshall from NSW Land and Housing Corporation thank you for your support through out the year, I am extremely grateful for all your hard work for the community and the support I have received.

A huge thank you to Rooty Hill RSL for the clubs grant, which provided funds for cement slab, shipping container and 2 programs were run for the local community children/youth. The art work on the shipping container looks fantastic, thank you to Danielle for your artist skills and working with the local kids with their designs on the shipping container.

Rap 4 Change and the crew thanks for your delivery of your program, the kids/youth had a great time learning how to RAP and put their own words to music.

Willmot Community HUB has had air conditioners and security cameras installed which has been a great relief for the community when attending programs.

The Men Empowering Themselves program built a feature wall and garden beds for the Willmot Community HUB. Funding provided by Social Housing Community Improvement Fund Round 1.

The Men's Group have moved from Willmot Community HUB and are now situated at Bidwill and will be setting up at the Cottage Gardens. The Cottage Gardens received funding from Social Housing Community Improvement Fund Round 1 and Round 2.

The funding is for security cameras, gazebo and concrete paths and slab.

Lynda Murphy thanks for all your support , attending conferences what would I do with out you?

Kaye, Julie, Leanne and Nicole, your dedication preparing food hampers on a weekly basis. Our President Kaye leads the way along with Lynda, Julie and Leanne helping out at the cottage.

I am extremely grateful for the support I receive.  
I am truly blessed to have you all working with me.

Wendy for her beading expertise with Bidwill High School kids and Leanne who volunteers her time to attend the Program.

Peter what can I SAY! Without you some days, I would be in tears. You rescue me when I have issues with my computer and lets face it most of the time it's the operator ME! I am grateful that you drop everything to help me and the cottage with your IT expertise.



## *Thanks from Ivanka*

I want to give a special thanks to Ken the Community appreciates all the donations, pick ups and deliveries, words cannot describe how important you are to the cottage and me!

Your dedication to your community is selfless and your are an extraordinary man!

Sammy from AWESOME HANDYMAN thankyou for your kind donation the funds will be used towards a basketball court for the community. Also thanks for donations of household items which is distributed to the community.

Boris from ROTADYNE for your kind donation of the Water Tank for the shipping container.

Oz Harvest - Food Donations for Weekly Hampers  
Albert - Christ Mission Possible –Food Donations for Weekly Hampers  
Dave - Living Bread Ministries for Fortnightly Dinners

Guardian Funeral Homes Minchinbury  
Marty Secheny - Bidwill Hotel  
Ed Husic - MP Federal Member for Chifley  
Edmond Atalla - MP Member for Mt Druitt  
Rooty Hill RSL - Clubs Grant - Urban Myths Project  
The boys who help carry in gear for the ladies groups and helping me  
TAFE students for their enthusiasm and fresh ideas

Thanks to Debbie Higginson from Mt Druitt Learning Ground  
Wendy and Rebecca– Bidwill High Chifley Campus  
Vicki ,Willmot Community Group and Willmot Public School  
Josephine Rechichi WASH HOUSE, Mt Druitt Reconciliation Group,  
Maria Bozikis - Mission Australia  
Mark - Blacktown City Council - Bidwill Festival  
Ned - Rap 4 Change and the crew it has been a pleasure working you all.

Ray, Father Stan and Father Gregory - Holy Family for the Space at Willmot  
Youth off the Streets, Anglicare, Bridges, CatholicCare.

A special thanks to Max Employment and Mission Providence and the partnership for the Work 4 dole program. Thanks to all participants who have attended the program.

Graceades Cottage is truly blessed with all the participants and the hard work that is contributed while attending their hours at the cottage.

To all who donate items such as clothing, furniture, bric a brac, toys etc to be distributed to the community your generosity means a great deal to the cottage and the community! Thanks

John Clark for your expertise in building construction, thanks for all your hard work!

**I would like to thank all the volunteers who have helped make it such a successful year.  
We are a great TEAM**

**Patricia, Brenda, Janice, David and Management Committee thank you for all the support!  
.... And for putting up with me for another YEAR!**

**GOD BLESS!**

# CERAMICS

Ceramics is a great way to relax and to create an art piece they can treasure or give as gifts

Mondays brings ladies together to chat, have a cuppa, eat cake and exchange ideas.

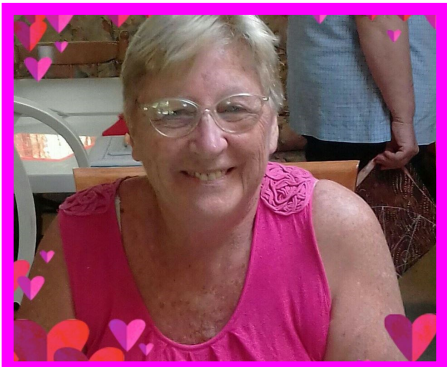
As I love to help people, I take great pride in watching them create art pieces and if they require my skills in ceramics painting I am happy to help out.

The Ceramics group brings many community members together , which not only brings new ideas but also forms friendships.



**Lynda Murphy**





**Elaine Parker**

# QUILTING

Hi I'm Elaine and I run the quilting classes every Thursday 10am to 1.30pm.

We start with a cuppa and a chat.

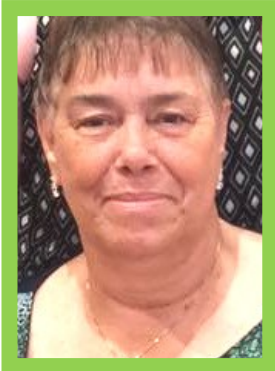
The ladies are always keen to try new designs, which I help to create.

They usually work on their own creations, but sometimes we come together with the same projects which is very exciting to see the different effects as they use their own materials.

We share ideas and it's a great way to make special things or gifts. Anyone is welcome to join us.

- Elaine, Quilting teacher.





# SCRAPBOOKING & CARD MAKING

**Barbara Hopkinson**

On the 2nd Saturday of each month up to seven ladies attend a Scrap-booking class where they learn new ideas for their memory pages. They also spend time working on their family albums and preserving their memories while enjoying each others company, as well as offering helpful hints and tips.

On the 3rd Saturday day of each month up to nine ladies learn how to make interesting and fun cards which they give to family and friends for all occasions.

While some cards are a challenge others are simple and very pretty. Lots of different techniques are used and some very affective stamping which adds to the overall effect.

All these ladies also have lots of fun and go home with a great sense of accomplishment.





Wendy Howard

# BEADING

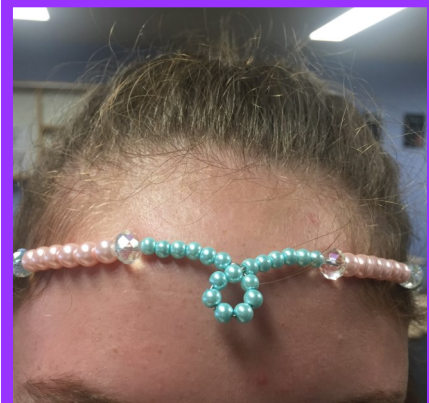
Beading program at Bidwill High School has had another successfully . The students have made beautiful jewellery pieces over the year , under the guidance of Wendy . Leanne volunteers her time and helps Wendy with the students .The students have made ear rings, bookmarks, bracelets, headbands, necklaces , Christmas decorations, angels, dreamcatchers.

Wendy teaches students the steps from how to make pieces from the beginning of each jewellery piece. Wendy teaches students how to use the tools of the trade, how to attach hooks, clasps, spacers and how to finish off the end product. The students are shown which beads are used for each item that is made.

Most items the students make are given as gifts to family members and the feedback is always positive. Students also make items for themselves and are proud to wear and use items made.

Wendy has been an amazing teacher and the students love chatting to her , the Beading Program has been extremely successful over the past 5 years and this is due to Wendy planning, taking the time to work with the students. Wendy has brought students together which has had positive effects students have gained confidence in themselves and interact with one another and made new friendships while attending the beading program.

Thank you Wendy for the amazing job you have contributed to the beading program.



# CHAT AND CRAFTS

I love our group on a Tuesday because we can talk about anything and we are always there for each other. Some of us live alone and have no one else in our lives it is so good to have friends who don't judge you. Thank you Ivanka for giving us this space - Helen King

I enjoy the Tuesday lunch group with the caring and laughter we share. It is a fantastic community service and neighbourly - Jill Eddy

It's a great place to get together with other women to talk freely. We are a close group with others joining all the time. It is very good to have somewhere to get together that is safe—where we can learn different crafts and just about anything. Thanks Ivanka.

I like coming to the Cottage because of the friendships I've made over the years. The information we get from Ivanka and the people who run Graceades is always very helpful - Brenda Martin

I enjoy coming to the Graceades Cottage as I find the atmosphere very friendly and the company of the other women very gratifying. I have received some very helpful information about various programs. That are available as well. I also wish to thank Ivanka for all the help she has given me with my housing needs.

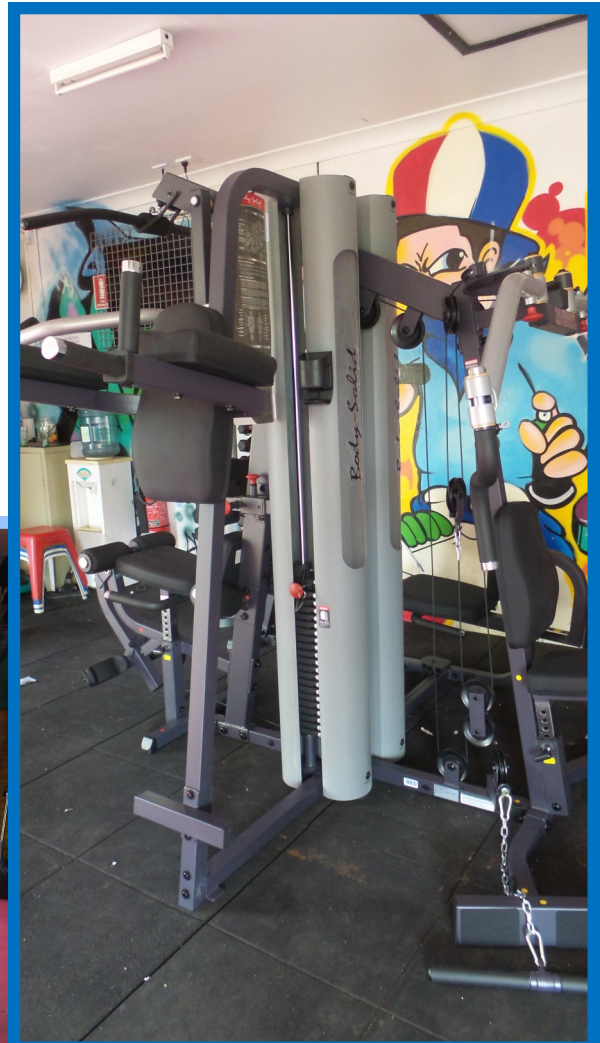
I enjoy going to Graceades to socialise with likeminded friends, interesting conversation, laughter and support when needed.



# YOUTHSHED

Youth and Adults from the local area enjoy training in the YouthShed-GYM. They are in a safe environment to get together and socialise while also exercising and utilising the fantastic facilities that the YouthShed-GYM hold. Those that attend the gym understand the policy of “neutral ground” that is in place and show this by respecting one another.

This training will help them achieve a healthy mind and healthy body. Disadvantaged, at risk young people have limited opportunities to engage in otherwise costly fitness programs. These young people are often early school leavers, unemployed and at risk of homelessness.





# M.E.T.S

*Men Empowering them Selves*

**David Luxford**

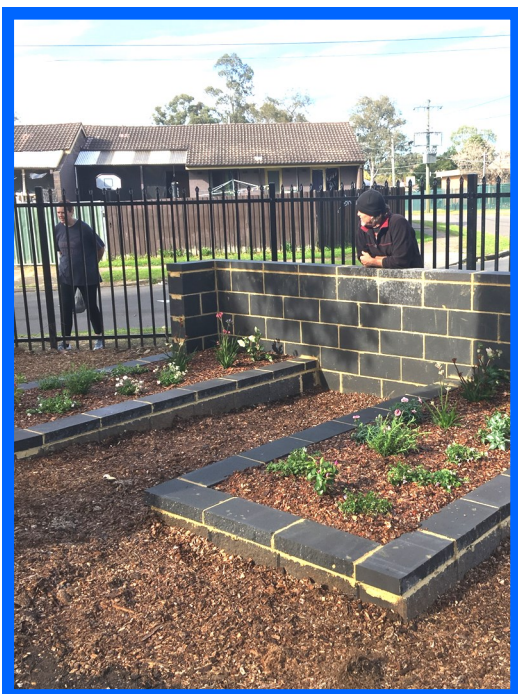
Willmot Community Hub had received funding to build a concrete garden block wall feature and garden bed for the Willmot community built by the group on a concrete footing and was constructed using cement products. All blocks were laid in a brick laying style, garden bed were filled with soil and various plants were planted.

Men's health week was celebrated with a BBQ and various guest speaker present to the group about men's health, suicide prevention, available resources within the community that are at their disposal.

Following the transition from Will mot community Hub the group removed the timber pergola and rebuilt the structure at our new location.

The group has started to maintain and begin the ground work for the new design for the Bidwill site that has been donated by FACS Housing Work includes retaining wall footing preparation and the construction of the pergolas.

Attendance levels have risen to 13 with an average of 7-9 men's attending each Friday most men are still completing their work development orders which pays off the fine debts with State Debt Recovery.





# CHRIST MISSION POSSIBLE AND OZHARVEST

Thank you to Christ Mission Possible and OzHarvest for your kind donations of food and the great work that the volunteers put into making approx. 60 hampers weekly. The hampers are distributed throughout the community and is appreciated by all. Thanks for your on going support.

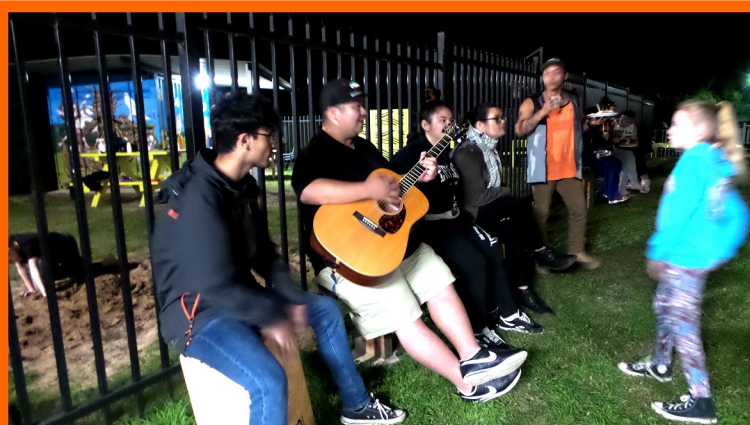


# FOOD VAN

Food Van is held every 2nd Wednesday of the month, it is held at night and organised and run by local church organisation Living Bread Ministries with the food cooked and donated by Christ Mission Possible - Kingswood, volunteers cook the food.

David Eco and his smiling group of volunteers open the night with a small prayer before dinner. Dinner is then served to the community who sit down and have a chat while eating, after dinner everyone gathers around for a hamper to take home.

The community is extremely grateful for the delicious food that is served.



# Neighbourhood Centres Week

## 3<sup>rd</sup> May 2017

Families came together and attended Neighbourhood Centre's Week Event at the cottage. There were sporting activities, BBQ and Ice Cream Van. Rap 4 Change had everyone up on their feet dancing, singing, rapping etc. The afternoon was a huge success with parents, children, grandparents all interacting with staff, volunteers and meeting residents in their local community.





# Neighbourhood Centres Week

3<sup>rd</sup> May 2017



# BIDWILL FESTIVAL

**Saturday 17<sup>th</sup> September 2016**

Year after year the Bidwill Festival keeps getting stronger with the support of community residents, Bidwill Residents Action Group, Blacktown City Council and local community services working together. The wind did not dampen the day it was a success. Blacktown City Council provided stage, entertainment for the day. Mt Druitt TAFE students painted kids face, braided hair, painted nails took photos in the photo booth.. Rap 4 Change - Skate park was a huge success with the young children learning how to ride a skateboard with instructors and all safety gear was provided for them to wear. There was entertainment for young and old dancing, signing, cultural dancing etc. Nirimba TAFE students sold cakes and raised money for Bidwill Primary School. Thanks to all who attended, had a stall, volunteered the Bidwill Festival is a great community day and this is shown by the numbers of attendees.



# Bidwill Festival

17<sup>th</sup> September 2016



# Australia's Biggest Morning Tea

## 7<sup>th</sup> June 2017

As a community we agree that we all know or have heard of someone that has been affected by Cancer. Biggest Morning Tea brings a community together to enjoy a cuppa, have a chat, share a story, eat a cake or scone. Gifts were raffled to raise extra funds for research to find a cure for cancer. The rain did not dampen our day. Thank you to all who attended to make the day a success.



# Tag 4 Trust

## 19<sup>th</sup> April 2017

Tag 4 trust is an event which was a partnership with Graceades Community Cottage, Rap 4 Change, Blacktown City Council, The Hive, Jesuit Social Services, NSW Police Force, NSW Fire and Rescue and NSW Ambulance. The main purpose of the event was to break the stigma and barriers between Police Force, Ambos, and Firies and Kids/Youth and their families. Participants played Oz Tag in teams coached by Police Force, Fire Brigade and Ambulance workers. All participants were given a medal. The winning team then played a friendly match with Police, Firies and Ambos. All enjoyed the day and commented they cannot wait for next Tag 4 Trust event.





# Lauren Cooper

## Student Placement - OTEN TAFE NSW

Hi my name is Lauren and I had the privilege of doing my work placement hours at Graceades Cottage while studying my Diploma of Community Services. While working at Graceades I was able to see the work of Ivanka and the team plus learn about the Mount Druitt Community. Which is unreal and the Community is very well looked after. The amount of endless thankless work that is done from helping people with their housing issues to events that are free and fun bringing the community together.

What I have learnt and got to experience in my time is unforgettable. Ivanka involved me in everything.

- **Festivals:** Where we got to meet other organisations. We get involved with the community and work with the kids doing beading. We would eat lots of sausage sizzles, dance, get henna, get our hair braided and watch the community plus different cultural group's dance and sing. Bringing the community together and working with each other.
- **Clients:** Collecting case notes from the clients so Ivanka could help them with housing issues or court cases they have coming up.
- **Schools:** Going into high schools working with the kids in Beading program where we have a chat during our time and enjoy making necklaces, bracelets, angels and many more creative collective items that would be treasurable for them and their families. We also go in the Primary School work with kids in life skills after hours. We would enjoy having a feed before getting into art and crafts, going outside to do sports, playing board games and learning core values of life.
- **Sporting Events:** With a couple of organisations we organised a Tag4Trust which was Oz Tag Tournament in school holidays where the Emergency Services coached the kids to build community trust. It was the first one that had ever been held and will be a yearly event. The outcome and being involved was unreal. Just seeing kids that had a bad image about the Police to seeing them hugging them plus high fives and their families just being so supportive as well. Kids that had never played Oz Tag before running around with massive smiles and the Emergency Services just making the day fun and competitive in learning team spirit at the same time. I got to bring the Ambulance Officer on board which I got to build a relationship with as well. To now being so involved in organising the Swish4Trust 3 on 3 Basketball Tournament which the community wanted another event coming off the Tag4Trust Event. I come in at the end of the organising and what a rush that was. We had so much to do and it got pulled off also after the event we had a big debrief meeting which we learnt so much from what went wrong to the positive outcome of the day. Which has helped with organising our next event.
- **In House Events:** Australia Biggest Morning Tea even though the weather was horrible the amount of food was unreal and delicious and many of the community turned up from the head of housing to the Emergency services it was great with the interaction.
- **Wednesday Night Dinners:** Anybody in the community come for a great feed provided by services outside of Graceades. We help serve the food and get to chat with the people while they enjoy a great feed.

I can't thank the team enough at Graceades for how easy it was to feel comfortable and get involved. Meeting all the ladies that come in and do all the different activities from quilting to just having a chat. Listening to them and watching them create beautiful items it is great to watch. Even my kids got to experience this with me which was even more special. Not only to watch what I get to do but learn about what the world is really like. People out there don't get to have such a good life as other people do. Life isn't about money it's about love, care, thoughtful and honesty.

All the work behind the scene are effortless and very time consuming. Communication is the main key to all of this as well working as team in the community. As we just don't work within the organisation but with many in the community. After every festival we would debrief have coffee and relax before going back to the cottage.

I loved my time at Graceades and will definitely be in frequently getting I involved in the events and keeping up with the relationships I've made with in my time. I recommend any one to come and have this experience. Ivanka I can't thank you enough for allowing me to come when I could due to my work and family commitments and look forward to working with you all more in the future.

Lauren Cooper.



# Work Placement Student Warda Jabeen



My stay at Graceades Cottage is a beautiful journey with beautiful and experienced people.

I was really disappointed as I couldn't find a good place to complete my work placement but Graceades Cottage opened their doors for me at my time of distress and welcomed me with love and care.

I had a very pleasant and joyful time during my work placement. By working with Graceades Cottage I have experienced how a real community works and what are the challenges you face every day. As a new community worker I have realised how much input and effort you have to put in to build up a community and making it stronger each passing day.

I have learned during my studies that a community worker only works to build his or her community stronger not for themselves or getting any rewards, but I've always doubted that until I met these wonderful people at Graceades who only works for their community and its people. They work passionately and without any expectations to be rewarded.

I have also enjoyed meeting different people, volunteers and local residents and learnt a lot during my time here not just about the work but also about the area and its people.

At the end, I would like to thank Ivanka Pelikan for giving me this opportunity and having faith in me and my work. She is the best mentor, guide and a wonderful soul who likes to help everyone around.

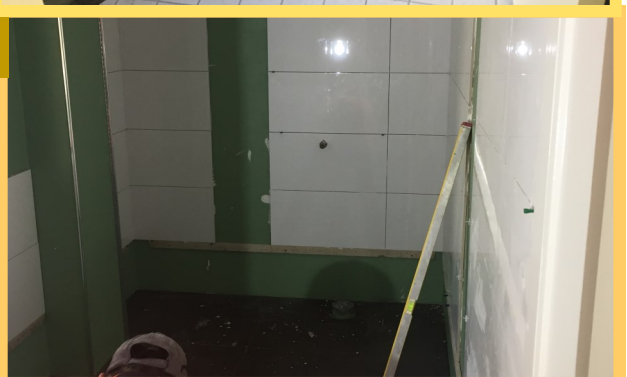
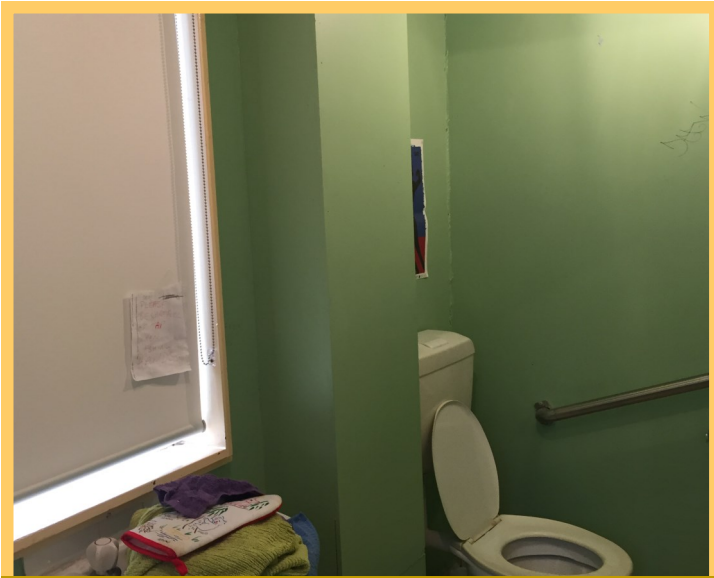
In future if anyone required any help or want to enjoy working in a real community centre, without a second thought I would recommend only one name to them and that would be GRACEADES COTTAGE.

With lots of prayers and wishes for this awesome organisation and its beautiful people.

***Warda Jabeen***

# Renovation of the new Disability Bathroom and Flooring

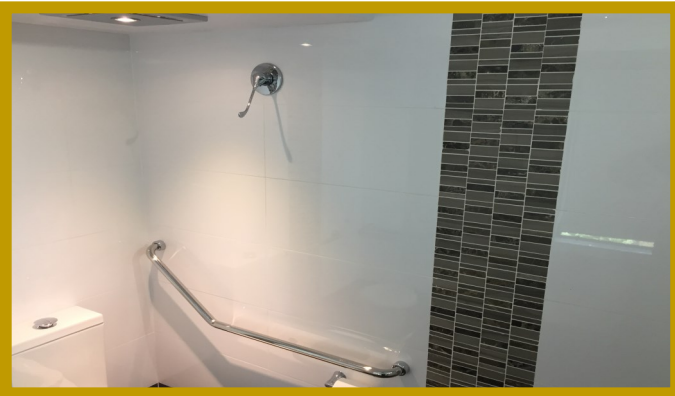
JANUARY 2017



# New Bathroom and Flooring



# The finished product Disability Bathroom



# Urban Myths Project



Productivity Bootcamp clearing yard for concrete slab for shipping container. Dave installing shelving in the shipping container. Danielle artist painting shipping container. Concrete poured, shipping container delivered.

# Urban Myths Project



Kids drawing their designs and art works to be put on the shipping container. Danielle the artist put the kids designs on the container. Kids painting with Danielle on the shipping container.





# Urban Myths Project

Child drawing his art work for the shipping container. Rap 4 Change program working with the kids/youth on the Rap songs.



## Innovation Project—HOOK'D UP

Janice O'Neill ... Team Leader Family and Children's Services  
Co-ordinator and facilitator of HOOK'D UP Program  
Leanne Whelan ... Assistant Facilitator HOOK'D UP Program  
Patricia Formosa ... Program Accreditation

The HOOK'D UP project was not refunded by Mission Australia as such after the first 5 years. This Innovation project was funded from July 2015 to June 2017 with a reduction in funding and the change of direction being to gain accreditation for the HOOK'D UP program.

This year has seen HOOK'D UP delivered at Madang Primary School in Whalan and Noumea Primary School in Shalvey. Participants are children from early and middle years who may be having difficulties with their school learning due to conditions such as anxiety, bi-polar, ODD, ADHD, OCD and children at various stages of the Autism spectrum.

The HOOK'D UP Program has enabled these children to re-connect with their school communities and re-ignite their "Life-long love of Learning". Using fun sessions of craft or sporting activities, with a strong personal development component, teaching positive core values such as Trust, Honesty, Respect, Integrity Responsibility, Compassion Fairness, Self-Discipline, Perseverance and Citizenship. These lessons spill out in to participants' home and school lives improving social skills and self-confidence/self-esteem.

Gathering evidence based statistics to support the positive outcomes achieved by the HOOK'D UP Program has been the main function of this project. However, it is impossible not to be caught up in the struggles of the participant families. This unending struggle has seen us caught up in day to day parenting issues and supported referrals for individual children who have displayed signs of mental health issues or have to handle diverse and multiple negative issues in their home life which impacts their school learning.

The application process to submit for consideration to be accredited as an 'Evidence Based Program' proved to be quite involved with very strict data collection methods and highly professional methodologies needing to be followed and described for the 'Expert Panel' to consider. Along-side this a training manual needed to be produced to show that the HOOK'D UP Program could be replicated for use by other Service Providers.

Unfortunately though we spent considerable time and effort to produce a creditable application to be considered, the HOOK'D UP program was unsuccessful in it's bid to gain accreditation as an Evidence Based Program.

This means that although Janice has spent nearly 7 years delivering the HOOK'D UP Program at local Mt Druitt Primary Schools, Graceades Cottage was unable to fund a full time position for her in the 2017-2018 financial year.

Sad to say that at the time of writing this report, Janice is no longer part of the Graceades Cottage team, but we wish her well in her future endeavors.

The HOOK'D UP Program remains a valuable part of Graceades Cottage School Programs and we thank Janice for all her years of service.



# The Year It Was



Street Beat-Shalvey 12th April 2017



Street Beat-Shalvey 12th April 2017



Willmot Community HUB  
After School Program  
19th August 2016



Kids Christmas Party  
19th December 2016 at the Cottage



NAIDOC DAY  
Emerton Leisure Centre  
6th July 2016



Kids Christmas Party  
19th December 2016 at the Cottage

# The Year It Was



**Bidwill Housing Pop-Up Day  
30th November 2016**



**Willmot Public School  
Wish Day  
23rd November 2016**



**Ivanka Surprise 49th Birthday  
at the Cottage**



**Christmas at the Cottage  
19th December 2016**

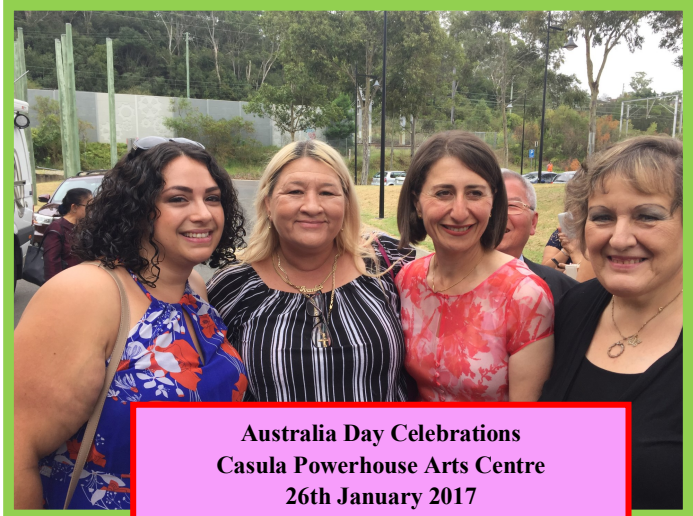


**Food Hampers Packed by Volunteers Food  
donated by Oz Harvest and  
Christ Mission Possible**

# The Year It Was...



**Halloween Willmot HUB  
Face Painting 28th October 2016**



**Australia Day Celebrations  
Casula Powerhouse Arts Centre  
26th January 2017**

**Joesphine, Ivanka, Gladys Berejiklian  
Premier of NSW and Lynda**



**Halloween  
Willmot HUB  
Face Painting  
28th October 2016**



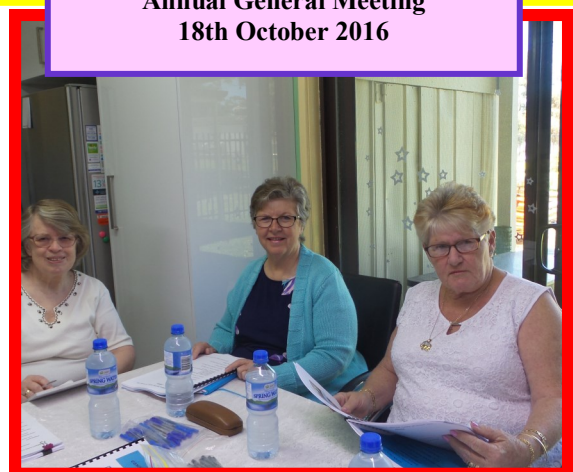
**Tag 4 Trust  
17th May 2017**



**Graceades Community Cottage  
Annual General Meeting  
18th October 2016**



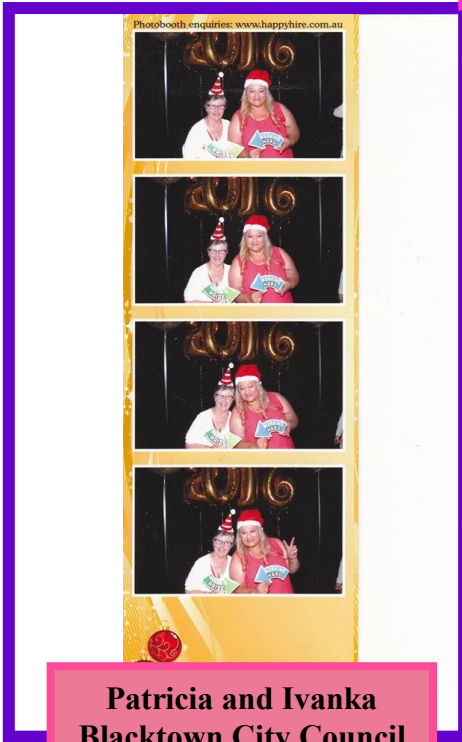
**Willmot Community Group  
Mothers Day High Tea  
12th May 2017**



# The Year It Was



**Men's Health Week  
30<sup>th</sup> June 2017**



**Patricia and Ivanka  
Blacktown City Council  
Christmas Party 2016**



**Junior Parliament - Volunteering at  
Cottage Removing dirt from garden beds  
27th September 2016**



## Continued from AGM 2015 -2016 Graceades Cottage Renovations

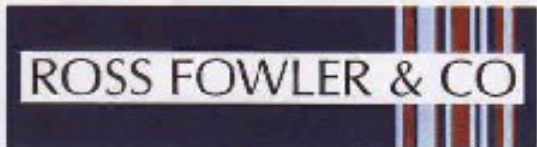
It has been a year and it has been a lovely adjustment to our beautiful new kitchen and our appliances stainless steel fridge, oven, stove range hood, microwave, sink, kitchen tap, and not to mention the Dishwasher. Air-conditioners, storage cupboards, concrete paths and concrete slab that was replaced behind my office no flooding or wet carpet in my office now, new led lighting, carpet replaced and our building repainted outside, roof fixed no leaks, new blinds that match and work. New garden beds, extended back yard with fencing panels supplied, IT upgrade for our computer room, TV in our meeting room, carpentry repairs, plastering, wooden benches made. The weekend was a busy one trades working together as one. Electricians, cabinet makers, gyprocks, carpenters, plumbers, painters, IT Data technicians, roofer, fencers, concreters, excavator, trucks, tilers EVEN the rain did not dampen the moods of tradies and volunteers. BBQ breakfasts all food donated, Indian lunches, coffee cart. Struggle Street opened Graceades Community Cottage to Australia and Ben Fordham opened his airways on 2GB Radio. The response was amazing the Australian Public opened their hearts and pockets. A Current Affair filmed the renovations over the weekend and aired the cottage make over on the 23rd July 2015.

**Graceades Is Extremely Lucky and Grateful To All.**



**Ben Fordham 2GB Radio**





Chartered Accountants and Business Advisors  
Ross Fowler B.Comm. FCA ABN 96 768 893 858

**GRACEADES COMMUNITY COTTAGE INCORPORATED**  
**ABN 26 134 480 262**

**FINANCIAL REPORT**  
**FOR THE YEAR ENDED**  
**30 JUNE 2017**

**Liability limited by a scheme approved under  
Professional Standards Legislation**



11 Tindale Street Penrith NSW 2750  
PO Box 830 Penrith NSW 2751

Tel 102 4722 3066  
Fax 102 4722 3077

Email [penrith@rossfowler.com.au](mailto:penrith@rossfowler.com.au)  
Web [www.rossfowler.com.au](http://www.rossfowler.com.au)



*Liability limited by a scheme approved under Professional Standards Legislation*



**GRACEADES COMMUNITY COTTAGE INCORPORATED**  
**ABN 26 134 480 262**

**CONTENTS**

Statement of Comprehensive Income	1
Balance Sheet	2
Notes to the Financial Statements	5
Statement by Members of the Committee	8
Auditors' Report	9
Compilation Report	11
Consolidated Income and Expenditure Report	12
Job Income and Expenditure Statement	15

**GRACEADES COMMUNITY COTTAGE INCORPORATED**  
**ABN 26 134 480 262**

**INCOME STATEMENT**  
**FOR THE YEAR ENDED 30 JUNE 2017**

	Note	2017 \$	2016 \$
<b>Income</b>			
Grants		426,445.66	329,053.13
Other income		7,869.57	4,476.54
		<u>434,315.23</u>	<u>333,529.67</u>
<b>Expenditure</b>			
Program costs		(21,522.54)	(27,304.32)
Auditors' remuneration		(3,000.00)	(2,700.00)
Depreciation expenses		(595.00)	(804.00)
Employment expenses		(247,100.97)	(251,482.32)
Other expenses		(100,236.33)	(45,216.24)
		<u>11,801.39</u>	<u>9,722.79</u>
Plus: Funds from Liability Account		60,850.78	13,738.09
Less: Surplus Funds C/Forward		(22,447.90)	(24,220.70)
<b>Surplus (Deficit) for the year</b>		<u>204.25</u>	<u>(761.82)</u>
Retained earnings at the beginning of the financial year		<u>33,315.95</u>	<u>34,077.77</u>
		<u>33,520.20</u>	<u>33,315.95</u>

The accompanying notes form part of these financial statements.  
 These statements should be read in conjunction with the attached compilation  
 report of Ross Fowler & Co

**GRACEADES COMMUNITY COTTAGE INCORPORATED**  
**ABN 26 134 480 262**

**BALANCE SHEET**  
**AS AT 30 JUNE 2017**

	Note	2017 \$	2016 \$
<b>ASSETS</b>			
<b>CURRENT ASSETS</b>			
Cash and cash equivalents	3	520,045.71	844,556.00
<b>TOTAL CURRENT ASSETS</b>		<u>520,045.71</u>	<u>844,556.70</u>
<b>NON-CURRENT ASSETS</b>			
Property, plant and equipment	4	2,496.64	3,091.64
<b>TOTAL NON-CURRENT ASSETS</b>		<u>2,496.64</u>	<u>3,091.64</u>
<b>TOTAL ASSETS</b>		<u>522,542.35</u>	<u>847,648.34</u>
<b>LIABILITIES</b>			
<b>CURRENT LIABILITIES</b>			
Accounts Payable and Other Payables	5	1,480.00	1,480.00
Provisions	5	4,057.95	4,417.58
Employees entitlements	7	20,125.84	21,895.06
Other current liabilities	8	437,541.77	758,865.07
<b>TOTAL CURRENT LIABILITIES</b>		<u>463,165.57</u>	<u>786,658.71</u>
<b>NON-CURRENT LIABILITIES</b>			
Employees entitlements	6	25,936.58	28,075.58
<b>TOTAL NON-CURRENT LIABILITIES</b>		<u>25,936.58</u>	<u>28,075.58</u>
<b>TOTAL LIABILITIES</b>		<u>489,102.15</u>	<u>814,734.29</u>
<b>NET ASSETS</b>		<u>33,520.20</u>	<u>33,315.95</u>
<b>EQUITY</b>			
Retained earnings	9	33,520.20	33,315.95
<b>TOTAL EQUITY</b>		<u>33,520.20</u>	<u>33,315.95</u>

The accompanying notes form part of these financial statements.  
These statements should be read in conjunction with the attached compilation  
report of Ross Fowler & Co

**GRACEADES COMMUNITY COTTAGE INCORPORATED**  
**ABN 26 134 480 262**

**NOTES TO THE FINANCIAL STATEMENTS**  
**FOR THE YEAR ENDED 30 JUNE 2017**

---

The financial statements cover Graceades Community Cottage Incorporated as an individual entity. Graceades Community Cottage Incorporated is a not for profit Association Incorporated in New South Wales under the Associations Incorporation Act 2009.

The functional and presentation currency of Graceades Community Cottage Incorporated is Australian dollars.

Comparatives are consistent with prior years, unless otherwise stated.

**1 Basis of Preparation**

In the opinion of the Committee of Management the Association is not a reporting entity since there are unlikely to exist users of the financial report who are not able to command the preparation of reports tailored so as to satisfy specifically all of their information needs. These special purpose financial statements have been prepared to meet the reporting requirements of the Act.

The financial statements have been prepared in accordance with the recognition and measurement requirements of the Australian Accounting Standards and Accounting Interpretations, and the disclosure requirements of AASB 101 Presentation of Financial Statements, AASB 107 Statement of Cash Flows, AASB 108 Accounting Policies, Changes in Accounting Estimates and Errors and AASB 1054 Australian Additional Disclosures.

The financial statements have been prepared on an accruals basis and are based on historical costs modified, where applicable, by the measurement at fair value of selected non current assets financial assets and financial liabilities.

Significant accounting policies adopted in the preparation of these financial statements are presented below and are consistent with prior reporting periods unless otherwise stated.

The following significant accounting policies, which are consistent with the previous period unless stated otherwise, have been adopted in the preparation of this financial report.

**2 Summary of Significant Accounting Policies**

**Income Tax**

The association being a non-profit community service organisation, has been granted an exemption from income tax.

**GRACEADES COMMUNITY COTTAGE INCORPORATED**  
**ABN 26 134 480 262**

**NOTES TO THE FINANCIAL STATEMENTS**  
**FOR THE YEAR ENDED 30 JUNE 2017**

---

**Plant and Equipment**

Plant and equipment is carried at cost or fair value less, where applicable, any accumulated depreciation and impairment of losses. Plant and equipment is depreciated on a straight line basis over the assets useful life to the Association, commencing when the asset is ready for use.

**Depreciation**

The depreciable amount of all plant and equipment is depreciated over the useful lives of the assets to the Association, commencing from the time the asset is held ready for use.

**Cash and Cash Equivalents**

Cash and cash equivalents comprises cash on hand, demand deposits and short term investments which are readily convertible to known amounts of cash and which are subject to an insignificant risk of change in value.

**Employee Benefits**

Provision is made for the association's liability for employee benefits arising from services rendered by employees to balance date. Employee benefits that are expected to be settled within one year have been measured at the amount's expected to be paid when the liability is settled.

Employee benefits payable later than one year have been measured at the present value of the estimated future cash outflows to be made for those benefits. Those cashflows are discounted using market yields on national government bonds with terms to maturity that match the expected timing of cashflows.

**Provisions**

Provisions are recognised when the association has a legal or constructive obligation, as a result of past events, for which it is probable that an outflow of economic benefits will result and that outflow can be reliably measured.

**Goods and Services Tax (GST)**

Revenues, expenses and assets are recognised net of the amount of GST, except where the amount of GST incurred is not recoverable from the Australian Tax Office. In these circumstances the GST is recognised as part of the cost of acquisition of the asset or as part of an item of the expense. Receivables and payables in the balance sheet are shown inclusive of GST.

**GRACEADES COMMUNITY COTTAGE INCORPORATED**  
**ABN 26 134 480 262**

**NOTES TO THE FINANCIAL STATEMENTS**  
**FOR THE YEAR ENDED 30 JUNE 2017**

	2017	2016
	\$	\$
<b>3 Cash and Cash Equivalents</b>		
Cash on Hand	300.00	300.00
CBA - Cheque Account	21,429.92	18,703.92
CBA - Business Online Saver	495,315.79	825,654.78
	520,045.71	844,658.70
<b>4 Property, Plant and Equipment</b>		
Plant & Equipment - at cost	6,713.64	6,713.64
Less: Accumulated Depreciation	(6,409.00)	(6,332.00)
	304.64	381.64
Office Equipment - at cost	15,019.00	15,019.00
Less: Accumulated Depreciation	(12,827.00)	(12,309.00)
	2,192.00	2,710.00
<b>Total Plant and Equipment</b>	2,496.64	3,091.64
<b>Total Property, Plant and Equipment</b>	2,496.64	3,091.64
<b>5 Accounts Payable and Other Payables</b>		
<b>Current</b>		
Audit Fees Accrued	1,480.00	1,480.00
	1,480.00	1,480.00
<b>6 Provisions</b>		
<b>Current</b>		
Provision for Equipment Replacement	1,000.00	1,000.00
Provision for Refreshment	1,000.00	1,000.00
Provision for Rent/Relocation	2,437.93	2,417.58
	4,437.93	4,417.58

**GRACEADES COMMUNITY COTTAGE INCORPORATED**  
**ABN 26 134 480 262**

**NOTES TO THE FINANCIAL STATEMENTS**  
**FOR THE YEAR ENDED 30 JUNE 2017**

	<b>2017</b>	<b>2016</b>
	<b>\$</b>	<b>\$</b>
<b>7 Employee Entitlements</b>		
<b>Liabilities</b>		
<b>Current</b>		
Provision for Holiday Pay	18,919.64	18,324.19
Provision for Holiday Pay (LEP)	3,208.20	2,671.67
	<u>20,126.84</u>	<u>21,596.06</u>
<b>Non-current</b>		
Provision for Long Service Leave	23,487.85	21,522.05
Provision for Long Service Leave (LFP)	2,348.73	6,553.63
	<u>25,836.58</u>	<u>28,075.68</u>
<b>8 Other Liabilities</b>		
<b>Current</b>		
Insurance Claim	2,489.98	-
Work for Done Program	2,536.36	-
Willmot Mens Shed	-	10,354.38
basketball Court	2,258.20	-
Recycled Teenagers Group Funds (307)	155.56	155.86
METS Volunteer Grant	105.31	-
Facility Account Willmot Rent	181.54	1,351.38
Graceades Carcen	24,013.11	18,050.00
Bidw II Festival 2017 (339-2)	959.09	486.37
HF Hook'd Up (341-1)	-	2,163.74
HF Indigenous Art (341-2)	-	1,558.18
HF RAGE (341-3)	-	1,820.79
HF Rep for Change (341-4)	-	1,137.99
Fresh Food Friday Grant (342)	-	2,890.91
METS Volunteer Grant (343)	-	2,812.73
Empower Youth Init (Bootcamp)	340,205.45	716,222.73
DSS Strength Comm Grant	2,548.00	-
Graceades Org Lecture Projects (250)	(65.22)	-
Bootcamp Administration	41,604.68	-
SHCIF - Garden Project (344)	10,942.71	-
SHCIF - Cottage Upgrade (345)	3,585.00	-
SHCIF - Willmot Upgrade (346)	3,867.37	-
Tag 4 Trust (345)	1,443.05	-
	<u>437,541.77</u>	<u>758,565.07</u>

GRACEADES COMMUNITY COTTAGE INCORPORATED  
ABN 26 134 480 262

NOTES TO THE FINANCIAL STATEMENTS  
FOR THE YEAR ENDED 30 JUNE 2017

	2017	2016
	\$	\$
<b>9 Retained Earnings</b>		
Retained earnings at the beginning of the financial year	33,315.95	34,077.77
Net Surplus (Net deficit) attributable to the association	<u>204.25</u>	<u>(761.82)</u>
Retained earnings at the end of the financial year	<u>33,520.20</u>	<u>33,315.95</u>



**GRACEADES COMMUNITY COTTAGE INCORPORATED**  
**ABN 26 134 480 262**

**STATEMENT BY MEMBERS OF THE COMMITTEE**

The committee has determined that the association is not a reporting entity and that this special purpose financial report should be prepared in accordance with the accounting policies outlined in Note 1 to the financial statements.

In the opinion of the committee the financial report as set out on pages 1 to 7:

1. Presents a true and fair view of the financial position of Graceades Community Cottage Incorporated as at 30 June 2017 and its performance for the year ended on that date
2. At the date of this statement, there are reasonable grounds to believe that Graceades Community Cottage Incorporated will be able to pay its debts as and when they fall due.

This statement is made in accordance with a resolution of the Committee and is signed for and on behalf of the Committee by

Committee  
Member:

Kaye Reeder  
Kaye Reeder (President)

Committee  
Member:

B. Hopkinson  
Barbara Hopkinson (Treasurer)

Dated this 3rd day of October 2017

**INDEPENDENT AUDITOR'S REPORT  
TO THE MEMBERS OF  
GRACEADES COMMUNITY COTTAGE INCORPORATED  
ABN 26 134 480 262**

**Scope****The Financial Report and Committee's Responsibility**

The financial report comprises the statement of financial position, income and expenditure statement, accompanying notes to the financial statements, and the statement by members of the committee for Graceades Community Cottage Incorporated (the association), for the year ended 30 June 2017.

The committee of the association is responsible for the preparation and true and fair presentation of the financial report and have determined that the accounting policies used and described in Note 1 to the financial statements which form part of the financial report are consistent with the financial reporting requirements of the Associations Incorporations Act New South Wales and are appropriate to meet the needs of the members. This includes responsibility for the maintenance of adequate accounting records and internal controls that are designed to prevent and detect fraud and error, and for the accounting policies and accounting estimates inherent in the financial report.

The financial report has been prepared for distribution to members for the purpose of fulfilling the committee's financial reporting requirements under the Associations Incorporations Act New South Wales. We disclaim any assumption of responsibility for any reliance on this report or on the financial report to which it relates to any person other than the members or for any purpose other than that for which it was prepared.

**Audit Approach**

We conducted an independent audit in order to express an opinion to the members of the association. Our audit was conducted in accordance with Australian Auditing Standards. In order to provide reasonable assurance as to whether the financial report is free of material misstatement. The nature of an audit is influenced by factors such as the use of professional judgement, selective testing, the inherent limitations of internal control, and the availability of persuasive rather than conclusive evidence. Therefore, an audit cannot guarantee that all material misstatements have been detected.

We performed procedures to assess whether in all material respects the financial report presents fairly, in accordance with the accounting policies as described in Note 1, so as to present a view which is consistent with our understanding of the company's financial position. These policies do not require the application of all Accounting Standards and other mandatory professional reporting requirements in Australia. No opinion is expressed as to whether the accounting policies used, and described in Note 1, are appropriate for the needs of the members.

We formed our audit opinion on the basis of these procedures, which included:

examining, on a test basis, information to provide evidence supporting the amounts and disclosures in the financial report, and

assessing the appropriateness of the accounting policies and disclosures used and the reasonableness of significant accounting estimates made by the committee.

While we considered the effectiveness of management's internal controls over financial reporting when determining the nature and extent of our procedures, our audit was not designed to provide assurance on internal controls.

**INDEPENDENT AUDITOR'S REPORT  
TO THE MEMBERS OF  
GRACEADES COMMUNITY COTTAGE INCORPORATED  
ABN 26 134 480 262**

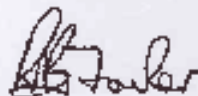
**Independence**

In conducting our audit, we followed applicable independence requirements of Australian professional ethical pronouncements.

**Audit Opinion**

In our opinion, the financial report of Graceades Community Cottage Incorporated presents a true and fair view in accordance with the accounting policies described in Note 1 to the financial statements, the financial position of Graceades Community Cottage Incorporated as at 30 June 2017 and the results of its operations for the year then ended.

**Name of Firm:** Ross Fowler & Co  
Chartered Accountants



---

R B Fowler FCA  
Registered Company Auditor 01810

**Address:** 11 Tindale Street Penrith NSW 2750

**Dated this 3rd day of October 2017**

*Liability limited by a scheme approved under Professional Standards Legislation.*

**COMPILATION REPORT  
TO GRACEADES COMMUNITY COTTAGE INCORPORATED  
ABN 26 134 480 282****Scope**

On the basis of information provided by the Committee of Management of Graceades Community Cottage Incorporated, we have compiled, in accordance with APS 5; Statement or Compilation of Financial Reports the general purpose financial report of Graceades Community Cottage Incorporated for the year ended 30 June 2017 as set out on pages 12 to 37.

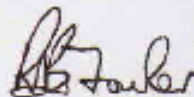
The Committee of Management is solely responsible for the information contained in the general purpose financial report and has determined that the accounting policies used are consistent with the financial reporting requirements of the Association's Constitution and are appropriate to meet the needs of the Committee of Management for the purposes of complying with the Association's Constitution.

Our procedures use accounting expertise to collect, classify and summarise the financial information, which the Committee of Management provided into a financial report. Our procedures do not include verification or validation procedures. No audit or review has been performed and accordingly no assurance is expressed.

To the extent permitted by law, we do not accept liability for any loss or damage which any person, other than the Association, may suffer arising from any negligence on our part. No person should rely on the general purpose financial report without having an audit or review conducted.

The general purpose financial report was prepared exclusively for the benefit of the Association and the purpose identified above. We do not accept responsibility to any other person for the contents of the general purpose financial report.

**Name of Firm:** Ross Fowler & Co  
Chartered Accountants



R B Fowler FCA

**Address:** 11 Tindale Street Parrith NSW 2750

**Dated this 3rd day of October 2017**

*Liability limited by a scheme approved under Professional Standards Legislation.*



**GRACEADES COMMUNITY COTTAGE INCORPORATED**  
**ABN 26 134 480 262**

**CONSOLIDATED INCOME AND EXPENDITURE STATEMENT**  
**FOR THE YEAR ENDED 30 JUNE 2017**

	Note	2017 \$	2016 \$
<b>INCOME</b>			
Funds from Liability Account		10,850.76	13,736.09
Administration Contribution		981.92	1,745.44
Bootcamp Administration		2,395.44	-
Connect KWG		13,526.21	20,063.23
Department of Social Services		5,503.64	5,503.64
Donation Bidwill Hotel		5,269.32	-
Donations Received		1,150.00	200.00
Graceades Org Future Programs		4,065.22	13,392.26
Grants - CDSE		15,422.73	-
Grants - Dept. Families Housing Comm Serv		106,493.00	-
Grants - FACS		211,165.21	196,149.15
Grants - Mission Australia		52,156.03	51,687.00
Grants - Sport & Recreation		-	3,677.20
Holy Family/Jesuit		11,280.70	16,018.18
Interest Received		2,899.67	1,866.26
LAS Lawyers		-	20,909.09
Membership Fees		67.73	43.28
NSW Housing		-	707.01
Project Fees/Charges		1,190.90	836.37
Reimbursement Fees		78.35	443.75
Room Hire		272.73	-
Sundry Receipts		0.00	0.00
Workers Comp Policy Refund		305.76	(74.01)
		440,165.92	347,295.73

These statements should be read in conjunction with the attached completion  
report of Ross Fawcett & Co

**GRACEADES COMMUNITY COTTAGE INCORPORATED**  
**ABN 26 134 480 262**

**CONSOLIDATED INCOME AND EXPENDITURE STATEMENT**  
**FOR THE YEAR ENDED 30 JUNE 2017**

	Note	2017 \$	2016 \$
<b>EXPENDITURE</b>			
Activity Expenses - Food, Materials & Contribution			
Audit Fees		15,882.54	13,659.30
Bank Charges		3,000.00	2,700.00
Building & Construction		317.62	274.52
Cleaning & Gardening		66,152.30	-
Computer Software & Requisites		1,890.95	3,663.92
Conferences & Seminars		2,387.22	2,842.35
Depreciation		2,325.35	1,782.42
Donations & Gifts		595.00	504.00
Electricity & Water		463.68	581.81
Equipment & Furniture Purchases (Small Items)		3,563.08	3,234.88
Facilitator Fees		34,434.16	113.82
Hire Fees/Deposits		4,764.55	5,857.73
Holiday Leave		-	1,114.55
Insurance		7,829.78	690.88
Journals/Manuals etc		3,717.62	3,673.98
Long Service Leave		81.82	84.17
Management Expenses		(2,230.10)	(2,105.63)
Membership Fees & Subscriptions		1,122.07	4,095.62
OH&S Expenses		1,449.08	1,828.36
Printing, Postage & Stationery		-	757.20
Reimbursed Fees Paid		9,918.46	7,213.79
Rent		27.27	92.73
Repairs & Maintenance		-	54.55
Room Hire		1,254.74	2,025.00
Security Costs		-	1,186.30
Service Contract		9,190.76	1,576.37
Staff Amenities		7,900.00	7,800.00
Staff Training		121.91	271.8*
Sundry Expenses		10.31	497.98
Superannuation Contributions		0.50	-
Telephone & Internet		17,711.21	19,125.52
Taxi Allowance		4,129.72	5,375.38
Transport Fees		460.00	494.00
Travel Reimbursement		48.18	719.61
Wages - Cleaning		4,371.12	4,064.24
Wages - Learning/Enrichment		4,599.15	4,723.04
Wages & Salaries		-	721.20
Work Cover		209,661.37	217,486.34
		4,474.55	4,664.84

These statements should be read in conjunction with the attached supplementary report of Ross Fowler & Co

**GRACEADES COMMUNITY COTTAGE INCORPORATED**  
**ABN 26 134 480 262**

**CONSOLIDATED INCOME AND EXPENDITURE STATEMENT**  
**FOR THE YEAR ENDED 30 JUNE 2017**

	Note	2017 \$	2016 \$
Surplus from operations		422,513.94	323,806.88
Less Surplus Funds C/Forward		(22,447.90)	(24,220.70)
<b>Net Surplus (Net Deficit) for the year</b>		<b>204.25</b>	<b>(767.82)</b>
Retained surplus at the beginning of the financial year		33,315.36	34,077.77
<b>Retained surplus at the end of the financial year</b>		<b>33,520.20</b>	<b>33,315.95</b>

These statements should be read in conjunction with the attached comprehensive report of Price, Fowler & Co  
Page 14

**GRACEADES COMMUNITY COTTAGE INCORPORATED**  
**ABN 26 134 480 262**

**JOB INCOME AND EXPENDITURE STATEMENT**  
**FOR THE YEAR ENDED 30 JUNE 2017**

	2017	2016
	\$	\$
<b>COTTAGE (114)</b>		
<b>INCOME</b>		
Funds from Liability Account	-	10,259.57
Administration Contribution	523.50	972.16
Book Keeping Reimbursement	1,924.00	1,908.40
Donations Received	-	200.00
Graceades Org Future Programs	-	12,085.76
Grants - FAGS	211,165.21	196,090.67
Interest Received	945.95	1,119.38
Membership Fees	32.52	-
Reimbursement Fees	75.35	46.75
Sundry Receipts	0.80	0.80
Workers Comp Policy Refund	305.76	174.01
	<u>215,074.59</u>	<u>277,887.49</u>
<b>EXPENSES</b>		
Activity Expenses - Food Materials & Contribution	1,732.73	6,553.05
Audit Fees	2,400.00	2,700.00
Bank Charges	317.52	274.32
Cleaning & Gardening	2,075.50	3,826.01
Conferences & Seminars	2,325.55	1,782.42
Building & Construction	1,018.05	-
Computer Software & Requisites	2,108.22	2,542.35
Depreciation	595.00	504.00
Donations & Gifts	453.65	381.61
Electricity & Water	2,712.61	2,626.31
Equipment & Furniture Purchases (Small Items)	972.29	86.57
Facilitator Fees	1,170.00	2,280.00
Holiday Leave	7,395.45	972.03
Insurance	2,602.07	3,576.08
Journals Manuals etc	81.82	-
Long Service Leave	1,965.30	(3,269.14)
Management Expenses	1,122.57	4,095.92
Membership Fees & Subscriptions	1,449.58	1,825.38
OH&S Expenses	-	257.20
Printing Postage & Stationery	6,733.71	4,623.95
Rent	-	54.55
Repairs & Maintenance	1,024.58	1,167.47
Room Hire	-	1,165.00
Security Costs	-	1,576.97

These statements should be read in conjunction with the attached consolidated  
report of Ross Fowler & Co.



**GRACEADES COMMUNITY COTTAGE INCORPORATED**  
**ABN 26 134 480 262**

**JOB INCOME AND EXPENDITURE STATEMENT**  
**FOR THE YEAR ENDED 30 JUNE 2017**

	2017 \$	2016 \$
Service Contract	7,900.00	5,850.00
Staff Amenities	121.91	271.81
Staff Training	10.91	487.98
Superannuation Contributions	10,831.58	11,473.12
Telephone & Internet	3,475.18	4,182.07
Transport Fees	48.18	64.47
Travel Reimbursement	2,028.72	3,105.80
Wages - Cleaning	4,599.18	4,723.04
Wages - Learning Enrichment	-	777.20
Wages & Salaries	141,865.70	150,114.06
Work Cover	3,132.21	3,237.37
	<u>214,870.44</u>	<u>223,549.31</u>
<b>NET SURPLUS (NET DEFICIT)</b>	<u>204.25</u>	<u>(781.82)</u>

These statements should be read in conjunction with the attached completion  
report of Ross Fowler & Co.



Layout Design by: Ivanka Pelikan and Chloe Fulton  
16th October 2017